



VOLUME 11, ISSUE 4

NOVEMBER, 2016

INSIDE THIS ISSUE:

Officer / Committee List	2
Events Calendar	3
President Message	4
Monthly Meeting Info	5
Job Postings	7
Committee Updates	9
BOG Meeting Minutes	11
Student Membership Application	16
Region I Officers	18
Winter Conference	20
ASHRAE Keynotes	22
Society News	26

November ASHRAE Meeting

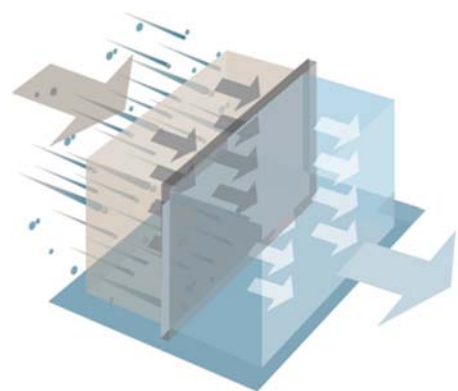
Topic: Gambling with Deferred Maintenance (Air Filtration)

Presenters: Jeff Thidbodeau and Steve Mongeau

When: Monday November 14th, 2016 at 12pm

Where: City Grill
384 East Ave, Rochester

Cost: \$25.00



Please RSVP by noon Friday, November 11th to Tim Duprey
tim.duprey@pres-services.com



Chapter Officers

President

Jeff Close, PE
(585) 289-6816
jeff.close@pres-services.com

President Elect

Bill Clark, PE
(585) 303-0729
william.clark@DayAutomation.com

Treasurer

Paul Kenna, PE
(585) 261-0558
pkenna@nrg-concepts.com

Secretary

Tom Streber, PE
(585) 272-9450
tstreber@jwswanson.com

Committee Chairs

CTTC

Jeff Wiedrick (585) 325-8354
jwiedrick@bergmannpc.com

Grassroots Government Advocacy

Tom Burke, PE (585) 429-3594
tom.burke@wegmans.com
George Herman (585) 219-5908
George@hermanhvac.com

Refrigeration Co-Chairs

Michael Nohle (585) 545-5522
mnohle@meiersupply.com
Sam Scorsone, PE (585) 232-5135
sscorsone@bergmannpc.com

Historian

Jake Hall (585) 869-5125
jhall@proairplus.com

Membership

Mike Benedict (585) 490-2661
mike@airsystemsbalancing.com

YEA

Matt Kremers (585) 398-8018
mkremers@mcsmms.com

Student Activities

Rob Hudson, PE (585) 341-3187
rhudson@ibceng.com

Board of Governors

Tim Duprey (3)
(585) 330-6430
tduprey@rochester.rr.com

Branden Farnsworth-Weinblatt, PE (3)
(585) 364-1628
bfweinblatt@popligroup.com

Steve Dear (2)
(585) 325-1290
sdear@crosbybrownlie.com

Sam Scorsone, PE (2)
(585) 232-5135
sscorsone@bergmannpc.com

Mike Benedict (1)
(585) 490-2661
mike@airsystemsbalancing.com

George Herman (1)
(585) 219-5908
george@hermanhvac.com

Education

Bill Murray, PE (585) 641-7121
bmurray@ec4b.com

Newsletter Editor

Scott Edwards (585) 301-6591
ashraerocnews@gmail.com

Attendance

Timothy Duprey (585) 330-6430
tduprey@rochester.rr.com

Publicity

Mark Kukla (585) 232-3440
mark@airsystemsbalancing.com

Research Promotion

Matt Devlin (585) 232-5135
mdevlin@bergmannpc.com

Webmaster

Steve Dear (585) 325-1290
sdear@crosbybrownlie.com

Nominating / Past President

Christina Walter (585) 486-2148
cmwalter@trane.com

Buyer's Guide

Branden Farnsworth-Weinblatt, PE
(585) 364-1628
bfweinblatt@popligroup.com

SAVE THE DATE

ASHRAE 2016-2017 Meeting Schedule			
Date	Event	Theme	Location
Monday, 11/14/2016	Gambling with Deferred Maintenance (presented by Jeff Thidbodeau & Steve Mongeau, Flanders)	History Review (PDH Approved!)	City Grill @ 12:00 PM
Monday, 12/12/2016	Fundamentals of Refrigeration Principles and Common Components (presented by Sam Scorcone, PE, Bergmann Associates)	YEA Tech Session 1 PDH	City Grill @ 10:00 AM
Monday, 12/12/2016	Impact of new EPA and DOE Regulations on Refrigeration and Cooling (presented by Mike Nohle, MEIER Supply, Refrigeration Division Manager)	Resource Promotion (PDH Pending)	City Grill @ 12:00 PM
Monday, 1/9/2017	Cleanroom Design Considerations from a Certifiers Perspective (presented by Ralph Craft, R. Kraft, Inc)	(PDH Pending)	City Grill @ 12:00 PM
Friday, 2/10/2017	ASHRAE Valentines Dinner Dance	---	TBD
Monday, 2/13/2017	Data center and Critical space cooling technology advancements (presented by Mike DeGaetano, RL Kistler Inc)	Membership Promotion (PDH Pending)	City Grill @ 12:00 PM
Monday, 3/13/2017	ASHRAE Building Energy Quotient (bEQ) (presented by Hoy Bohanon, PE, President, Hoy Bohanon Engineering, PLLC)	Resource Promotion (PDH Pending)	City Grill @ 12:00 PM
Monday, 4/10/2017	Refrigeration Tour	Refrigeration Night (PDH Pending)	TBD
Monday, 5/8/2017	Annual ASHRAE Golf Outing and Picnic (Ravenwood Golf Course)	---	9:30 AM Golf 4:30 - 8:00 Picnic

Mission Statement

ASHRAE will advance the arts and sciences of heating, ventilation, air conditioning, refrigeration and related human factors to serve the evolving needs of the public and ASHRAE members.



Shaping Tomorrow's
Built Environment Today

Vision Statement

- will be the global leader in the arts and sciences of heating, ventilation, air conditioning and refrigeration.
- will be the foremost, authoritative, timely and responsive source of technical and educational information, standards and guidelines.
- will be the primary provider of opportunity for professional growth, recognizing and adapting to changing demographics, and embracing diversity.

President's November Message

November Newsletter 2016
President's Message

At last month's Chapter Meeting we handed out the following awards that were received at the 2016 CRC.

Newsletter – Black Ink Award Honorable Mention Plaque: **Scott Edwards**
Research Promotion – Full Circle Chevron: **Rochester Chapter**
Research Promotion – Bronze Treasury Ribbon: **Matt Devlin**

I would like to thank Mr. Mike DWein of Leidos Engineering for his "Highlights of the New Energy Code" presentation. His insights and knowledge of code development and implementation was very informative. This topic was well received and enjoyed by all. Our November Chapter meeting will be held on November 14th. During this meeting our Chapter Historian, Jake Hall will be presenting along with a feature presentation on Air Filtration. We hope to see you at our November Meeting.

Please continue to check out our website at www.rochester.ashraechapters.org for information on upcoming chapter meetings, current officer list and contact information, chapter newsletters, and more! Also take a minute and like us on Facebook at www.facebook.com/#!/ashraerochester.

Jeffrey Close, P.E.
2016-2017 President
Rochester Chapter



Jeff Close, 2016-2017 President

November Meeting Info

Please consider joining us for this upcoming monthly meeting and/or please forward this e-mail to anyone you may think would be interested in attending or benefit from this presentation.

November ASHRAE Meeting << PDH APPROVED>>

Date: Monday, November 14, 2016

Location: City Grill ****OUR NEW LOCATION****

Time: 12:00 PM Lunch Buffet ... Presentation to start approx. 12:30pm

Cost: \$25.00

Speakers: Jeff Thidbodeau & Steve Mongeau {American Air Filter (AAF) Flanders}

Topic: Air Filtration

Note: (1) PDH {Approved}

Jeff Thidbodeau

Southern New England/Upstate New York District Manager American Air Filter International

Jeff has been with AAF since 2006 covering all of multiple portions of NY and New England. He has been involved in multiple projects covering multiple industries: Gas Phase projects at the JFK Library, VT Archives, Fuel Cell sector. Jeff has helped several partners achieve LEED Certification, as well as Carbon Footprint reduction goals. He is most excited about finally having a manufacturing presence in Upstate NY with the addition of the Hudson, NY facility to the AAF Flanders family.

Steve Mongeau

Manager, HVAC OEM American Air Filter International

Steve has had several roles with AAF over the last 15 years, and currently manages the OEM division for North America. Steve has managed National Accounts in Healthcare, Pharma and Commercial/Industrial divisions.

Remember, as an option, we have on-line payments available via PayPal. (no PayPal account required)

<< Pay for Meeting Registration online via PayPal >>

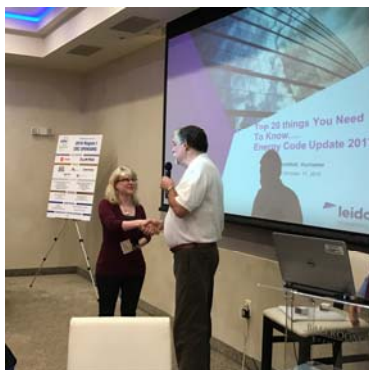
Use the following link: <http://rochester.ashraechapters.org/meetings.html>

Cash or check payment is still accepted at the door with your reservation.

Please RSVP no later than noon Friday November 11th to Tim Duprey

Phone: 585.330.6430 or e-Mail ... ASHRAERochester@gmail.com, tim.duprey@pres-services.com or tduprey@rochester.rr.com.

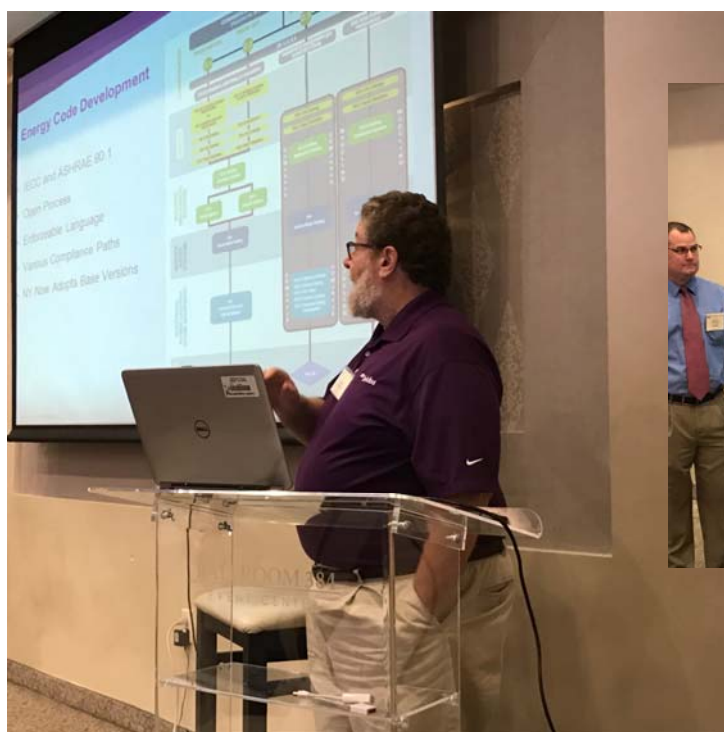
Highlights from October ASHRAE Meeting



(Left) Al Rodgers presents Christina Walter with a Past President Pin, recognizing her achievements this past year. Casey Bernhard (not pictured) also received a Past President Pin.



(Top Right and bottom right) Michelle Sommerman receives the Realto E. Cherne Award



Mike DeWein, Program Director for Leidos Strategic, gives a lecture on the highlights of the new energy code.






This section of the newsletter is reserved for those firms wishing to advertise their desires to hire from the Chapters Membership.

If you are interested in utilizing this FREE service provided by the Rochester Chapter, please contact our Chapter President, Jeff Close at (585) 289-6816 or by email jeff.close@pres-services.com.

This service is available to ASHRAE members for any local firm in our industry looking for knowledgeable persons in the HVAC&R industry.

Job ID / Location	2016-25804: US-NY-Rochester (1 position) 2016-25927: US-NY-Endicott (1 position)	
Minimum Experience (Years)	7	
Discipline	Buildings Engineering	

Your Opportunity:

Our Buildings Engineering group specializes in the design and development processes unique to buildings. Working closely with our clients, our dedicated professionals help to establish and understand the needs of a range of building projects. This is where great ideas and rewarding careers are built. For both public and private sector clients, we provide unique plan checking capabilities as well as energy engineering and performance engineering services, covering each of the major engineering disciplines-structural, mechanical, and electrical. In addition, we bring together innovative and functional design solutions for companies involved in the discovery, research and development, and commercial scale manufacturing of pharmaceuticals, biotechnology, and medical device products. Focused on providing cost-effective solutions to engineering challenges, we are involved in a diverse range of projects from the initial planning stages to design, construction, and commissioning. Our structure cultivates career growth and provides opportunities as unique as you are.

Your Duties:

- Duties will include but are not limited to preparation of project proposals and resulting contracts, project implementation plans, resource planning, quality control and design review, project team review and coordination, client, and financial management.
- May assist as mechanical engineering lead overseeing the engineering & design of plumbing / fire protection / HVAC and other mechanical systems for new and renovated buildings.
- Mechanical engineering - actual designs including the completion of code reviews, preparation of the basis of design, system calculations, mark-up of drawings, specification preparation, field investigations, construction estimating and site inspections and other such design as required to execute the mechanical construction for new or renovated buildings.
- May perform project manager duties as needed.
- Some travel to site locations or other Stantec offices may be required.

Your Capabilities and Credentials:

The successful candidate will possess:

- Requires a B.Sc. Mechanical Engineer
- NYS PE desired, registration in other states a plus
- 7+ years' experience required
- Must have strong Mechanical Engineering skills in Plumbing, Fire Protection, HVAC, and related mechanical systems
- Prior management experience is a plus
- Prior consulting engineering experience is required
- Experience using Autocad, Revit, Trane Trace or Equest is a plus
- Excellent verbal and written communication skills
- Excellent interpersonal skills with team members and clients

We put people first, and it shows. We're proud to be one of New York's Best Places to Work, as named by The Business Council of New York and NYS-SHRM.

Please apply online directly at:

- (Rochester) <https://jobs-stantec.icims.com/jobs/25804/senior-mechanical-engineer---buildings/job>
- (Endicott) <https://jobs-stantec.icims.com/jobs/25927/senior-mechanical-engineer---buildings/job>

Presidential Award Of Excellence



Download



Achievements



Report

Chapter: **ROCHESTER** ▼

Fiscal Year: **2016-2017** ▼

▶ Chapter Operations	Par: 1200	Min Points: 600	Total Points: 1070
▶ Chapter Technology Transfer	Par: 1050	Min Points: 450	Total Points: 225
▶ Grassroots Government Advocacy	Par: 650	Min Points: 500	Total Points: 50
▶ Historical Criteria	Par: 300	Min Points: 100	Total Points: 235
▶ Membership Promotion	Par: 800	Min Points: 500	Total Points: 400
▶ RP	Par: 1050	Min Points: 800	Total Points: 580
▶ Student Activities	Par: 500	Min Points: 300	Total Points: 900

Like us on Facebook!



Visit our new Facebook page by searching for "ASHARE Rochester" on Facebook. Any ideas for additions or improvements email to Mark Kukla at mark@airsystemsbalancing.com. Keep up to date with current events and photos from recent meetings.

Rochester Chapter

Committee Chairs Updates

Research Promotion



Research Promotion Report

What is the RP Campaign?

The RP Campaign is an annual fundraising campaign benefiting the funding of numerous ASHRAE Programs. These programs include:
ASHRAE Research

ASHRAE Scholarships for undergraduate students

ASHRAE Learning Institute (ALI) development of new courses & materials

Graduate Research Projects (Grants-in-Aid)

Young Engineers in ASHRAE (YEA) Leadership Training

Permanently endowed support to all of the above programs

The RP Campaign is overseen by the RP Committee, a standing ASHRAE Committee. The Committee is made up of 14 Regional Vice Chairs (RVC), 1 Consultant (past RVC), 3 Vice Chairs (past Consultant), and Chair (past Vice Chair). Staff support includes a 3-member team based at ASHRAE Headquarters. The RP Campaign raises over \$2.2 million a year from over 6,000 donors. These donors are made up of ASHRAE Members, industry associations, and industry organizations.

If you need further information please contact RP Staff – rp@ashrae.org - they'll be happy to help answer your questions or direct you to another staff member who specializes in that area.

Thanks again for all your support and I look forward to seeing you at the next Rochester Chapter Meeting.

Matt Devlin, CEM, CPMP

RP Chair

www.ashrae.org/contribute

Membership Promotion

ASHRAE Rochester Chapter- Membership Promotion

Please remember to take a few minutes to make sure that your profile is up to date at www.ASHRAE.org. Maybe you've changed jobs? email address? or would like to advance your membership (i.e. Associate Member to Member). Keeping this information current ensures that you get the most value out of ASHRAE.

Here is a list of new members since July 2016. If you see any of these individuals, please welcome them!

Mr Austin E DeMott	Associate
Miss Sarah Kirk	Student
Chris Lewis	Member
David J Zimmer	Associate
Mrs hiba isam alsharbati Eng	Associate
Mr Abdulaziz Alshimmari	Student
McKenzie Casciano	Associate
Mr Anthony m Prinz	Member
Mr Moaz Ashraf Saleh	Student
Mr Brian Smith	Associate
Ms Brianna P Stephenson	Associate
Miss Tuly Hazbar, Sr	Student
Mr Mohamed Khalid Alayat	Student

Thank you, and as always, thank you for your support for ASHRAE.

Sincerely,



ASHRAE
Rochester
Chapter

Membership Promotion

Join Online
ashrae.org/membership

ASHRAE Rochester Chapter
Rochester.ashraechapters.org

Michael Benedict
 (585) 490-2661
mike@airsystemsbalancing.com

Board of Governors Meeting Minutes



Rochester Chapter - ASHRAE

Board of Governors Meeting

October 14, 2016 @ 7:30 AM

Day Automation, 7931 Rae Blvd, Victor, NY 14564

President / CRC Delegate	Jeff Close	X
President Elect / Program/ CRC Alternate	Bill Clark	X
Treasurer	Paul Kenna	X
Secretary	Tom Streber	X
Immediate Past President & Nominating	Chris Walter	X
Board of Gov. (3) & Attendance Chair	Tim Duprey	X
Board of Gov. (3) / Buyers Guide	Branden Farnsworth-Weinblatt	
Board of Gov. (2) & Refrigeration Co-Chair	Sam Scorsone	
Board of Gov. (2) & Website Chair	Steve Dear	
Board of Gov. (1) & Membership Promotion (MP)	Mike Benedict	X
Board of Gov. (1)	George Herman	X
Historian Chair	Jake Hall	
Newsletter Editor	Scott Edwards	X
Resource Promotion Chair (RP)	Matt Devlin	X
Awards & Recognition Chair	Al Rodgers	
Chapter Technology Transfer Chair (CTTC)	Jeff Wiedrick	X
Education	Bill Murray	
Publicity	Mark Kukla	
YEA Chair (Young Engineers in ASHRAE)	Matt Kremers	X

Board of Governors Meeting Minutes



Rochester Chapter - ASHRAE

Board of Governors Meeting

October 14, 2016 @ 7:30 AM

Day Automation, 7931 Rae Blvd, Victor, NY 14564

Student Activities Chair (SA)	Rob Hudson	
Picnic/Golf Chair & CRC 2016 Committee Chair	Jim Browe	
Valentine's Dinner Dance	Jody McGarry	X
Grassroots Government Advocacy Chair	Tom Burke	
Refrigeration Co-Chair	Mike Nohle	
Women in ASHRAE	Jaimee Wilson	X

Minutes

1. Call to Order Jeff Close
2. Roll Call Tom Streber
3. Review and Approval of Previous Meeting Minutes All
 - Minutes approved.
4. Treasurer Paul Kenna
 - First Niagara changed to Key Bank
 - Current Statement Balances
 - 2016-2017 P&L Update
 - Paul to look into getting Jeff Ellis' name/SS# off account.
5. President Elect/Program Bill Clark
 - Programs complete
 - Need refrigeration program (April) details
 - December program is YEA sponsor of Tech Session prior to main program.
 - i. Tim D. to verify with City Grill
 - Looking into joint meeting for Refrig. meeting.

Board of Governors Meeting Minutes



Rochester Chapter - ASHRAE

Board of Governors Meeting

October 14, 2016 @ 7:30 AM

Day Automation, 7931 Rae Blvd, Victor, NY 14564

6. Attendance

Tim Duprey

- Previous meeting summary (Clam Bake)
 - i. Total Reservations 117
 - ii. Actual attendance 110 (61 non-member)
 - iii. Actual paid 119
 - iv. Total clams 187
- Currently 70 committed to October's meeting.

7. CTTC Report

Jeff Wiedrick

- Project submission (short form only) by April 1, 2017

8. Membership Report

Mike Benedict

- Current members
- Membership upgrades
- Recruitment
- Need bio's updated for grade advancement and YEA members (DOB)

9. Student Activities Report

Rob Hudson

- Student chapter status (MCC or RIT)
- Grant for senior project

10. Education Report

Bill Murray

- Scholarships available for college students and graduating seniors

11. YEA Report

Matt Kremers

- Nick Volker (IBC Eng.) and Mike Dobbertin (Turner Eng.) to attend spring leadership weekend in Denver (March '17)

12. Awards & Recognition Report

Al Rodgers

- Realto P Cherne Award to be presented to Michelle Sommerman at September's meeting.

13. Resource Promotion Report

Matt Devlin

- Current vs. Goal
- Full Circle Contributions
- A list of past donors is being compiled

Board of Governors Meeting Minutes



Rochester Chapter - ASHRAE

Board of Governors Meeting

October 14, 2016 @ 7:30 AM

Day Automation, 7931 Rae Blvd, Victor, NY 14564

14. Refrigeration Report Mike Nohle/Sam Scorsone
 - Tech session planning and PDH approval
15. Grassroots Government Advocacy Report Tom Burke/George Herman
 - Government official list (due 10/15)
 - Update website with listing of local & state energy codes
16. Newsletter Report Scott Edwards
 - Looking for a "Historic" or "Legacy" submission
 - Committee submissions
 - Newsletter deadline 10/28
 - RES deadline
17. Buyers Guide Branden Farnsworth-Weinblatt
 - Transition from Marianne
 - Plan/schedule for this year
 - Including business info in newsletter is considered for Buyer Guide participants
18. Historian Report Jake Hall
 - Digitizing archive status
 - CRC history display at chapter meeting
 - Invite life members to meetings and including a bio in the newsletter
19. Publicity Report Mark Kukla
 - "Like" on Facebook for info from latest events
20. Website Report Steve Dear/Kevin Wind
 - Initial updates complete
 - Monthly updates
 - Add link for Local and State codes
21. Nominating Report Chris Walter
 - List of candidates for Nominating Committee by Nov meeting

Board of Governors Meeting Minutes



Rochester Chapter - ASHRAE

Board of Governors Meeting

October 14, 2016 @ 7:30 AM

Day Automation, 7931 Rae Blvd, Victor, NY 14564

22. Valentines Dinner Dance Report Jody McGarry
 - Schedule & Venue
 - Strathallen 2/11, Century Club 2/10 or 2/11. Artisan's Works considered.
23. Golf/Picnic Report Jim Browe
24. Presidential Award of Excellence (PAOE)
25. New Business:
 - Constitution by-laws - APPROVED
26. Old Business:
 - 2015-16 Audit and Audit Committee to meet early November
 - Lynn Bellenger Hall of Fame Award Nomination to be resubmitted by 12/1
 - Centralized Regional Conference (CRC)
 - Women in ASHRAE - Jaimee Wilson
 - i. 22 members in Roch. chapter (9% of members)
 - ii. Looking for program ideas and chapter events to be more family oriented.
 - iii. (2) New female members
 - Student Branch (i.e. MCC, RIT, FLCC or UofR) meetings before year end
27. Set next BOG Meeting date / time / place.
 - Friday, November 11 @ 7:30 AM, Day Automation Office
28. Adjourn - 8:55am



ASHRAE Student Membership Application

What You'll Get With Your ASHRAE Student Membership!

What's "Cool" In ASHRAE

- ASHRAE promotes energy efficiency, savings and recovery
- ASHRAE reports on building controls, automation and integration
- ASHRAE focuses on green building issues and green technology
- ASHRAE maintains standards for indoor air quality
- ASHRAE promotes solar and other alternative energy sources
- ASHRAE offers certification programs, online learning opportunities and courses and seminars at ASHRAE Conferences

How Can ASHRAE Help You?

- Provide access to new technology
- Offer professional development opportunities
- Create opportunities for networking
- Offer online continuing education programs and eLearning programs

Student Member Benefits

- Access to members-only web pages
- Discounts on ASHRAE Handbooks
- Monthly ASHRAE Journal - print and digital
- HVAC&R Industry and Society Connections eNewsletters
- Complimentary ASHRAE Annual and Winter Conference registration (AHR Expo, Student Program, Technical Sessions)
- Virtual online HVAC&R resume posting, job and internship searching program

ASHRAE Student Member Opportunities

- Society and chapter-level scholarships for both undergraduate and graduate engineering students
- Discounts for student members on select publications, go to www.ashrae.org/bookstore for more information
- Student Design Competition
- Networking with local ASHRAE Chapters
- Senior Undergraduate Project Grant Program
- At the student branch level, you'll enjoy meeting other students with similar interests - if your school hasn't yet started a student branch, take charge and contact a faculty member and ask for help on getting started!

You can continue your student membership after college with the ASHRAE SmartStart Program. After you graduate, you pay \$20 for the first year, \$50 for the second and the third years before advancing to regular member dues!

**Join ASHRAE students on Facebook
Visit www.ashrae.org/students to join!**



ASHRAE
STUDENT MEMBERSHIP APPLICATION

AMERICAN SOCIETY OF HEATING, REFRIGERATING AND AIR-CONDITIONING ENGINEERS, INC.
ASHRAE • 1791 TULLIE CIRCLE NE • ATLANTA, GA 30329-2305 • FAX: 678-539-2212

FIRST NAME:

LAST NAME:

DATE OF BIRTH (mm/dd/yyyy)

Current Mailing Address: (this will be where all correspondence will be sent unless otherwise specified)

Street Address: _____ Apt. # _____ City: _____
State/Province: _____ Postal Code: _____ Country: _____
Email: _____ Alternate email: _____ Phone: _____

Permanent Mailing Address: (during the Summer Months and after graduation)

☐ Check if Current Address is the same as Permanent Address

Street Address: _____ Apt. # _____ City: _____
State/Province: _____ Postal Code: _____ Country: _____
Email: _____ Alternate email: _____ Phone: _____

ASHRAE protects contact information provided by its members and customers. To view ASHRAE's privacy policy visit www.ashrae.org/privacy-policy.

All student applicants must have the name and member number of an ASHRAE member serving as their student sponsor. If your Student Branch Advisor is an active Associate or Full member, he/she can serve as your sponsor. If you need assistance locating a sponsor, please email students@ashrae.org or call 678-539-1212. Also, you must list the name, phone and email address of your faculty advisor or course instructor.

Sponsor Name: _____ ASHRAE Member #: _____
Advisor/Instructor: _____ Phone: _____
Email: _____

I would like to participate in the activities of the _____ ASHRAE Chapter.

School Name: _____

Street Address: _____ City: _____ State: _____

Country: _____ Postal Code: _____

Expected Graduation Date: _____

Full time: ☐ Part time: ☐ Degree: _____

*Classification: Freshman ☐ Sophomore ☐ Junior ☐ Senior ☐ Masters/PhD ☐

ASHRAE Student Membership \$20.00 USD

ASHRAE Handbook - Fundamentals ☐ IP ☐ SI

(you will receive the most current edition of Fundamentals)

More than 900 pages of HVAC&R technical information and it includes the CD! (List Price \$195)

Student Member Price: \$49.00 USD \$ _____ USD

Total \$ _____ USD

*Additional books are available at ashrae.org/studentbookstore

*Please allow up to 30 days to receive new member packets. For U.S. book orders, allow 3-5 business days from processing. For international locations and Canada, allow 7-10 business days from processing.

To receive your subscription to the ASHRAE Journal, please answer the following questions by entering the appropriate codes in the spaces provided.

Which best describes your firm? _____

11. Consulting Engineering

12. Architect/Architectural & Eng Services

15. Design/Build

21. Contractor

26. Property Mgmt & Dev

31. Industrial Facility

41. Commercial Facility

42. Government, Healthcare, Education

43. Utility

51. Manufacturer/HVAC&R Equipment

61. Manufacturer's Representative

62. Sales Engineering

71. Wholesaler or Distributor

83. Library

84. Technical, Professional

or Trade Association

86. Student ***

91. Other (Please Specify) _____

Which best describes your title? _____

B. President

C. Partner

D. Associate

E. Owner

F. Vice President

G. Vice President Eng. Chief Engineer

K. Design Engineer

L. Project/Application Engineer

O. Facility Engineer/Manager

P. Research/Development Engineer

R. Sales Engineer, Sales

S. Purchasing Agent

T. Draftsperson

U. Estimator

W. Technician

X. Instructor, Professor

Y. Student ***

Z. Librarian

ZZ. Other (Please Specify)

ASHRAE Society Dues include \$6.00 for ASHRAE Journal. This amount is not deductible from Membership dues.

Please complete the ENTIRE application to ensure accuracy. Incomplete applications will NOT be processed.

Method of payment: ☐ VISA / Master Card ☐ American Express ☐ Diner's Club ☐ Check or money order enclosed*

Card Number: _____ Expiration Date: _____ CW No. _____ Amount: _____

Signature: _____ Date: _____

Print Name (as it appears on card): _____

*Checks will be accepted in U.S and Canadian funds. Credit Card payments will be accepted in U.S. funds only.

Region I Officers



REGION I COMMITTEE CHAIR CONTACT INFORMATION

Position	First	Last	Company	Address Line	City	State	Post Code	Phone	Email
Region Director and Regional Chair	William	Walter	Carrier Corporation	6304 Thompson Rd	Syracuse	NY	13221	(315)432-6267	r01drc@ashrae.net
Region Assistant Regional Chair	Joseph	Furman	Automated Logic	16 Country Way	Wallingford	CT	06492-5356	(203)678-2208	r01arc@ashrae.net
Region Members Council Rep	Joseph	Furman	Automated Logic	16 Country Way	Wallingford	CT	06492-5356	(203)678-2208	r01RMCR@ashrae.net
Region Treasurer	Darcy	Carbone	Stebbins-Duffy, Inc.	6 Damon Rd	Medford	MA	02155-2903	(617)957-2567	r01tr@ashrae.net
Region Grassroots Government Advocacy	Richard	Vehlow	NYS OGS Design	10 Catherine Pl	Latham	NY	12110-5204	(518)474-2471	r01GGAC@ashrae.net
Region Chapter Technology Transfer	Christopher	Phelan	Thermco	228 Scoles Ave	Clifton	NJ	07012-1126	(973)777-6700	r01rvcttc@ashrae.net
Region Membership Promotion	Lee	Feigenbaum						(347)533-0161	r01rvcm@ashrae.net
Region Research Promotion	Andrew	Manos	Stony Brook University	17 Horton St	West Islip	NY	11795-1039	(516)413-0214	r01rvcrp@ashrae.net
Region Student Activities	Steven	Sill	New York State Office of People with Developmental Disabilities	2930 State Route 104A	Sterling	NY	13156-4253	(718)494-5133	r01rvcsa@ashrae.net
Region Regional Historian	Stanley	Westhoff	Unilux Advanced Manufacturing LLC	18 Santee Dr	Gansevoort	NY	12831-1322	(518)587-1949	r01hist@ashrae.net
Region YEA	Chonghui	Liu				NY		(315)956-6533	r01yea@ashrae.net
Region Nominating Committee Member	Russell	Stuber	U & S Services Inc	95 Stark St	Tonawanda	NY	14150-1210	(716)693-4490	r01nom@ashrae.net
Region Nominating Committee Alternate	Darcy	Carbone	Stebbins-Duffy, Inc.	6 Damon Rd	Medford	MA	02155-2903	(617)957-2567	r01noma@ashrae.net
Region CRC General Chair	Jim	Browe						(585)697-0836	R01CRCChair@ashrae.net
Region Representative	Spencer	Morasch	First Energy Corporation					(201)825-7321	R01RR@ashrae.net
Region Electronic Communications	Stacie	Suh	Stebbins-Duffy, Inc.	10 Technology Drive	Peabody	MA	01960	(781)258-1002	r01ECC@ashrae.net
Region Webmaster	Stacie	Suh	Stebbins-Duffy, Inc.	10 Technology Drive	Peabody	MA	01960	(781)258-1002	r01ECC@ashrae.net
Region Refrigeration	Charles	Bertusch	Bergmann Associates	224 Harrison Street	Syracuse	NY	13202	(315)415-5364	r01ref@ashrae.net
Regional Program RVC	Peter	Oppelt	RF Peck	889 Atlantic Ave	Rochester	NY	14609	(585)697-0836	R01prg@ashrae.net

Email Address: r01drc@ashrae.net; r01arc@ashrae.net; r01drc@ashrae.net; r01ecc@ashrae.net; r01rvcttc@ashrae.net; r01rvcm@ashrae.net; r01rvcrp@ashrae.net; r01rvcsa@ashrae.net; r01ref@ashrae.net; r01yea@ashrae.net; r01tr@ashrae.net; r01nom@ashrae.net; r01noma@ashrae.net; r01RMCR@ashrae.net; r01hist@ashrae.net; R01ref@ashrae.net; R01prg@ashrae.net; r01GGAC@ashrae.net; R01CRCChair@ashrae.net; R01RR@ashrae.net



REGION I CHAPTER PRESIDENT CONTACT INFORMATION

Chapter #	Chapter Name	First	Last	Company	Address Line1	City State Zip	Phone	Email Address
001	BOSTON	William	Tang	BR+A Consulting Engineers	170 Clocktower Dr Unit 304	Waltham, MA 02452-7878	(617)925-8288	c001@ashrae.net
003	RHODE ISLAND	Paul	Reddington	Victaulic Company	26 Prairie Ct	Manchester, NH 03102-4964	(508)878-9159	c003@ashrae.net
004	CONNECTICUT	Brandon	Bradley	ABCO HVACR Supply + Solutions	515 Old Tolland Tpke	Coventry, CT 06238-1857	(203)325-9000	c004@ashrae.net
006	LONG ISLAND	Donald	Kane	Nassau Suffolk Engineering & Architecture	45 Swallow Ln	Brentwood, NY 11717-1344	(631)737-9170	c006@ashrae.net
007	NEW JERSEY	Dorrie	Mercurio		75 South St	Freehold, NJ 07728-2317	(732)761-0108	c006@ashrae.net
008	NEW YORK	Jose	Rodriguez	Wallace Eannace Associates	779 Susquehanna Ave	Franklin Lakes, NJ 07417-1321		c008@ashrae.net
009	NORTHEAST	David	Houle	EME Consulting Engineering Group	292 Washington Avenue Ext Ste 109	Albany, NY 12203-6385	(518)862-0882	c009@ashrae.net
010	CENTRAL NEW YORK	Mark	Yonnick	FW Webb Co	6792 Townline Rd	Syracuse, NY 13211-1911	(315)476-9322	c010@ashrae.net
011	ROCHESTER	Jeffrey	Close	PRES Energy Engineering	3777 Dewey Rd	Shortsville, NY 14548-9725	(585)289-6816	c011@ashrae.net
012	NIAGARA FRONTIER	Becca	Hojnacki	ECON Technologies	2640 Walden Ave	Buffalo, NY 14225-4736	716-693-4490	c012@ashrae.net
111	CHAMPLAIN VALLEY	Blaine	Conner	Vermont Mechanical Inc.	1 School St Apt 6	Montpelier, VT 05602-2912	(802)343-8644	C111@ashrae.net
118	MAINE	Rachel	Riley	Sweeney Rogers Geraghty Incorporated	215 E Grand Ave Apt 305	Old Orchard Beach, ME 04064-3028	(207)460-0076	C118@ashrae.net
129	TWIN TIERS	Travis	Fisher	Cornell University	51A Goodrich Rd	Owego, NY 13827-1552	(607)255-5608	C129@ashrae.net
146	BI-STATE	Brendan	Smith		33 Beach Rd	Ossining, NY 10562-3201	(914)741-1290	C146@ashrae.net
152	GRANITE STATE	Paul	Bemis	Applied Math Modeling Inc	75 S Main St Unit 7 PMB 144	Concord, NH 03301-4865	(603)369-6085	C152@ashrae.net

Email Address: c001@ashrae.net; c003@ashrae.net; c004@ashrae.net; c006@ashrae.net; c007@ashrae.net; c008@ashrae.net; c010@ashrae.net; c011@ashrae.net; c012@ashrae.net; c111@ashrae.net; c118@ashrae.net; c129@ashrae.net; c146@ashrae.net; c152@ashrae.net



REGION I CHAPTER NEWSLETTER CONTACT INFORMATION

Chapter #	Chapter Name	First	Last	Company	Address Line1	City State Zip	Phone	Email Address
001	BOSTON	Deanna	Adkison	AKF Group	197 Lothrop St	Beverly, MA 01915-3763	(617)535-8236	c001ne@ashrae.net
004	CONNECTICUT	Nichole	Petersen	Flow Tech Inc	10 Bidwell Rd	South Windsor, CT 06074-2412	(860)291-8886	c004ne@ashrae.net
006	LONG ISLAND	Liset	Cordero	MG Engineering DPC	170 Horton Ave	Valley Stream, NY 11581-1439	(212)643-9055	c006ne@ashrae.net
007	NEW JERSEY	Adele	Glaser	Trane	19 Chapin Rd Bldg B Suite 200	Pine Brook, NJ 07058-9385	(973)244-7731	c006ne@ashrae.net
011	ROCHESTER	Scott	Edwards	Johnson Controls	31 Barkwood Ln	Spencerport, NY 14559-2249	(585)301-6591	c011ne@ashrae.net
012	NIAGARA FRONTIER	Varun	Kulkarni	Zehnder Rittling	100 Rittling Blvd	Buffalo, NY 14220-1885	(405)385-1928	c012ne@ashrae.net
129	TWIN TIERS	Andrew	Nice	Meier Supply Co.	275 Broome Corporate Pkwy	Conklin, NY 13748-1511	(607)797-7700	C129ne@ashrae.net

Email Address:

c001ne@ashrae.net; c003ne@ashrae.net; c004ne@ashrae.net; C006ne@ashrae.net; c007ne@ashrae.net; c008ne@ashrae.net; c010ne@ashrae.net; c011ne@ashrae.net; c012ne@ashrae.net; c111ne@ashrae.net; c118ne@ashrae.net; c129ne@ashrae.net; c146ne@ashrae.net; c152ne@ashrae.net



REGION I CHAPTER WEBMASTER CONTACT INFORMATION

Chapter #	Chapter Name	First	Last	Company	Address Line1	City State Zip	Phone	Email Address
001	BOSTON	Kevin	Doty	Victaulic	12 Mohawk St Unit 9	Boston, MA 02127-3594	(484)523-8908	c001web@ashrae.net
007	NEW JERSEY	Dorrie	Mercurio		75 South St	Freehold, NJ 07728-2317	(732)761-0108	c006web@ashrae.net
008	NEW YORK	Gaspar	Cabrera	YR&G	163 W 23rd St	New York, NY 10011-2465	(917)783-0166 (917)7830166	c008web@ashrae.net
011	ROCHESTER	Stephen	Dear	Crosby Brownlie Inc	100 Nassau St	Rochester, NY 14605-1955	(585)730-2599	c011web@ashrae.net
012	NIAGARA FRONTIER	James	Price		1021 Klein Rd	Williamsville, NY 14221-1923	(716)645-5516	c012web@ashrae.net
118	MAINE	Stephan	Becker	SMRT	144 Fore St	Portland, ME 04101-4843	(207)772-3846	C118web@ashrae.net
129	TWIN TIERS	Michael	Colwell	Tri Cities Temperature Ctl Inc	122 Park Ave	Binghamton, NY 13903-3227	(607)724-8282	C129web@ashrae.net

Email Address:

c001web@ashrae.net; c003web@ashrae.net; c004web@ashrae.net; C006web@ashrae.net; c007web@ashrae.net; c008web@ashrae.net; c010web@ashrae.net; c011web@ashrae.net; c012web@ashrae.net; c111web@ashrae.net; c118web@ashrae.net; c129web@ashrae.net; c146web@ashrae.net; c152web@ashrae.net

FREE PASS



**AHR
EXPO®**

THE WORLD'S LARGEST HVACR MARKETPLACE

JAN 30-FEB 1
LAS VEGAS
2017



FREE PASS TO THE 2017 AHR EXPO COMPLIMENTS OF:

YOUR LOCAL ASHRAE CHAPTER

BE OUR GUEST AT THE 2017 AHR EXPO IN LAS VEGAS

SAVE \$30 FEE: REGISTER NOW ONLINE AT AHREXPO.COM OR BRING THIS CARD TO THE SHOW FOR FREE EXHIBIT HALL REGISTRATION

**2017
Winter
Conference**

Jan. 28 – Feb. 1
Las Vegas, NV

Caesars Palace



**AHR
Expo**

Jan. 30 – Feb. 1
Las Vegas, NV

Las Vegas Convention Center



The world's largest gathering of HVAC&R professionals will take place this January in Las Vegas, Nevada. ASHRAE's Winter Conference line-up includes 8 Conference Tracks, exciting tours, and Keynote Speaker Adam Steltzner, Chief Engineer EDL NASA Mars Rover Curiosity & Author. You don't want to miss this!

Detailed Tech Program available at www.ashrae.org/lasvegas.

Tracks include:

Track 1 – Fundamentals and Applications

Track 2 – HVAC&R Systems and Equipment

Track 3 – Water-Energy Nexus

Track 4 – Commercial and Industrial IAQ

Track 5 – Advances in Mission Critical Design and Operation

Track 6 – Climate Change and Its Effects on HVAC&R Design and Technologies

Track 7 – Energy Efficient Industrial Buildings and Life Safety

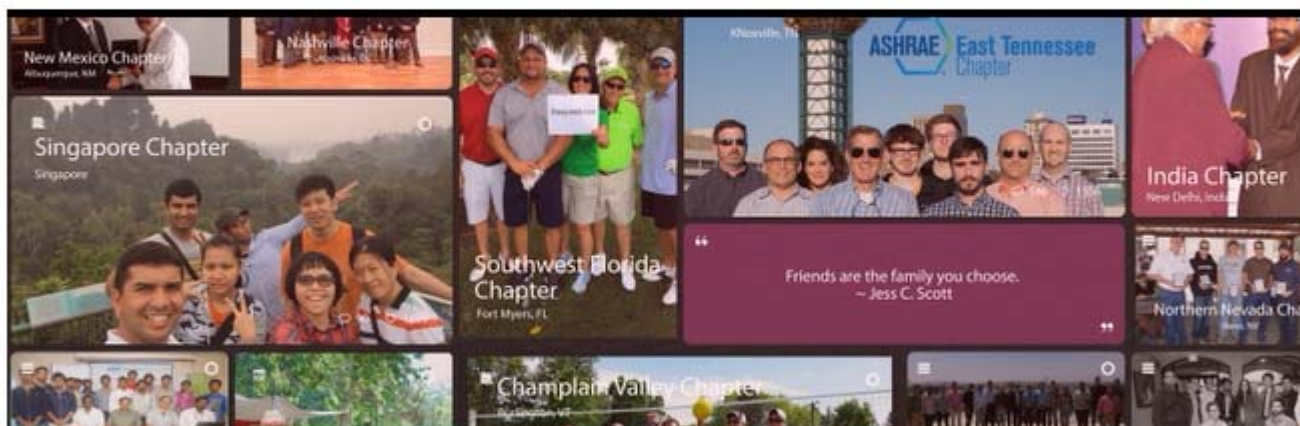
Track 8 – Building Operation and Performance: Meeting the Modeling Expectations

Learn more and register at
www.ashrae.org/LasVegas





Shaping Tomorrow's
Built Environment Today



Keynotes Newsletter

Daniel Gurley, Manager of Membership
Contact: DGurley@ashrae.org or 678-539-1127

Super CRC 2016 in Thailand

Congratulations to Region XIII and the Region-At-Large for completing a successful joint Super CRC that was held in Bangkok, Thailand earlier this month! There were more than 500 participants representing 35 ASHRAE chapters from both regions. Thank you to the chapters and regions for a job well done!

U.S. Chapters: File Your E-postcard

Due Nov. 15

The deadline date for U.S. Chapters to file their e-postcard is November 15, 2016. The following link is from the IRS website for the Annual Electronic Filing Requirement for Small Exempt Organizations: [Form-990-N\(e-Postcard\)](#). For more information on tax filing, please contact the Comptroller's office at awilhoit@ashrae.org.

Deadline for Honors & Awards



Do you know of somebody who is deserving of an ASHRAE Award? **December 1** marks the deadline for applications for several awards and distinctions. Please visit the [ASHRAE Honors & Awards page](#) to obtain more information, including detailed information on each award and how to submit your nomination. Visit the [Distinguished Lecturer page](#) for more information about the Distinguished Lecturer program and how to submit your nomination.

- F. Paul Anderson Award
- Fellow Nomination
- ASHRAE Award for Distinguished Public Service
- Honorary Member

- ASHRAE Hall of Fame
- ASHRAE Pioneers of the Industry Award
- Distinguished Lecturer

Questions? Call (678) 539-1123 or email chapterprograms@ashrae.org.

Get a DL to Present for You!

Does your employer support ASHRAE memberships or RP and want an engaging technical seminar? Does your ASHRAE Student Branch need an appealing speaker on a technical topic? Would your local or state government officials want to become more familiar or learn about an ASHRAE Standard? Get a DL to present for you!

Distinguished Lecturers (DLs) are ASHRAE members selected as expert speakers on a wide variety of HVAC/R topics. These speakers are perfect to educate elected officials and government employees about ASHRAE Standards, Guidelines, Publications, and Certifications. DLs can provide timely lectures and seminars for students working on ASHRAE Design Project, mechanical engineering courses, or other design projects. And, these speakers can present exclusive seminars to employers as a way to thank them for their membership support or RP contribution.

To plan for a DL presentation, contact your local Chapter Technology Transfer Chair.

Apply for a WISE Internship in D.C.

Applications due Dec. 31



Looking for an internship? ASHRAE is now accepting applications for the 2017 Washington Internships for Students of Engineering (WISE) Program, June 4 to August 4, 2017. College engineering students: see how you can contribute to the important intersections of technology and public policy. Applications are due December 31. [Learn more](#) about the program.

ASHRAE Student Scholarship and Grant Program

Scholarship Applications due Dec. 1

Grant Applications due Dec. 15

ASHRAE seeks to motivate students and prospective students worldwide to pursue engineering or technology careers in the HVAC&R field. The Society's [Scholarship Program](#) also serves the public interest by aiding in the education of men and women to become qualified to practice as engineers in HVAC&R.

The [ASHRAE Undergraduate Program Equipment Grants](#) provide funding to engineering, technical and architectural schools worldwide with the goal of increasing student knowledge, learning and awareness of the HVAC&R industry through the design and construction of equipment. Grants are to be used to fund equipment and supplies for senior projects and 2-year technical school projects that focus on ASHRAE-related topics. Grants may cover projects lasting from one academic term up to one year.

Questions about scholarships ? Contact Lois at lbenedict@ashrae.org

Questions about grants? Contact Katie at kthomson@ashare.org

Registration Open for NEW, DOE-aligned Commissioning Certification (BCxP)



The very first Building Commissioning Professional (BCxP) certification exams will be given at the [ASHRAE 2017 Winter Conference](#) on two convenient dates: Saturday, January 28 and Wednesday, February 1.

This new ASHRAE program validates competency against the National Institute of Building Sciences (NIBS) Better Buildings Workforce Guidelines scheme requirements for the Building Commissioning Professional certification, with the goal of achieving by March, 2017 Department of Energy (DOE) recognition of services provided by BCxP certificants . [Learn More & Apply.](#)

Questions? Contact [Tim Kline](#), Certification Manager.

Like us on Facebook | Follow us on Twitter | Join the conversation on ASHRAExCHANGE



News

1791 Tullie Cir. NE | Atlanta, Ga. 30329-2305 | 404-636-8400 | www.ashrae.org

For Release:
Oct. 11, 2016

Contact: Jodi Scott
Public Relations
678-539-1140
jscott@ashrae.org

Bids Solicited for First Project in ASHRAE Flammable Refrigerants Research Program

ATLANTA – Balancing the safety of flammable refrigerants with their impact on the environment requires an immense amount of information. To provide such needed data, ASHRAE is launching the initial project in a multi-million dollar research program that will establish a more robust fact base about the properties and the use of flammable refrigerants. The research is part of a \$5.8 million program funded by ASHRAE, the Air-Conditioning, Heating, and Refrigeration Institute (AHRI), the U.S. Department of Energy (DOE), the Association of Home Appliance Manufacturers (AHAM), the California Air Resources Board (CARB), and Johnson Controls. This program is part of an ongoing global effort to phase down the use of high global warming potential (GWP) refrigerants and identify appropriate climate-friendly alternatives. The program involves eight research projects, which are expected to be completed during 2017 with final results made available by the end of 2017. The findings from the projects will be used to update standards and codes that will govern the safe use of flammable refrigerants.

“ASHRAE is pleased to kick off its first project in this program,” Tim Wentz, ASHRAE president, said. “The rapidity with which technology advances building equipment and systems is creating challenges for our industry. Nowhere is this more evident than in dealing with refrigerants. This research is part of our push to harness and adapt new technologies to ensure a more sustainable future.”

The project, “Flammable Refrigerants Post-Ignition Simulation and Risk Assessment Update,” is the first of three projects being conducted by ASHRAE under this effort. The project will determine the consequences of ignition events through computer simulations. The findings will be used to update risk assessments previously funded by AHRI that determined the probability of ignition events.

The project will remain open for bid through Nov. 14, 2016. Those interested can find more information at www.ashrae.org/research.

Keynotes

Other projects to be funded by ASHRAE are:

- RP-1807, “Guidelines for Flammable Refrigerant Handling, Transporting, Storing, and Equipment Servicing and Installation,” slated to go out for bid before the end of the year.
- RP-1808, “Servicing and Installing Equipment Using Flammable Refrigerants: Assessment of Field-Made Mechanical Joints,” slated to go out to bid before the end of the year.

AHRI is funding three projects through its research arm, the Air-Conditioning, Heating and Refrigeration Technology Institute (AHRTI): AHRTI 9007, “Benchmarking Risk by Real Life Leaks and Ignitions Testing,” 9008, “Investigation of Hot Surfacing Ignition Temperature for A2L Refrigerants,” and 9009, “Leak Detection of A2L Refrigerants in HVAC&R Equipment.”

See next page for continuation

 Like us on Facebook |  Follow us on Twitter |  Join the conversation on ASHRAExCHANGE



News

1791 Tullie Cir. NE | Atlanta, Ga. 30329-2305 | 404-636-8400 | www.ashrae.org

For Release:
Oct. 11, 2016

Contact: Jodi Scott
Public Relations
678-539-1140
jscott@ashrae.org

Bids Solicited for First Project in ASHRAE Flammable Refrigerants Research Program

See previous page

DOE is funding two projects: “Investigating the Proper Basis for Setting Charge Limits of Flammable Refrigerants for Various Types of Products” at Oak Ridge National Laboratory and “Modeling Tools for Flammability Ranking of Low-GWP Refrigerant Blends” and “Development of Method of Test for Flammable Low-GWP Refrigerants” at the National Institute of Standards and Technology.

AHAM is funding research to investigate the potential real-life leakage and performance testing of A2L refrigerants in household room air conditioners, portable air conditioners and dehumidifiers. AHAM is planning to also conduct research on A3 refrigerants in household refrigerators and freezers.

ASHRAE, founded in 1894, is a global society advancing human well-being through sustainable technology for the built environment. The Society and its more than 56,000 members worldwide focus on building systems, energy efficiency, indoor air quality, refrigeration and sustainability. Through research, standards writing, publishing, certification and continuing education, ASHRAE shapes tomorrow’s built environment today. More information can be found at www.ashrae.org/

 [ews.](#)

Newsletter.msg

Like us on Facebook | Follow us on Twitter | Join the conversation on ASHRAExCHANGE



News

1791 Tullie Cir. NE | Atlanta, Ga. 30329-2305 | 404-636-8400 | www.ashrae.org

For Release:

Oct. 13, 2016

Editors Note: A photo of the signing is available.

CIBSE and ASHRAE mark 40th Anniversary with Historic Agreement

LONDON – ASHRAE and the Chartered Institution of Building Services Engineers (CIBSE) have signed a partnership agreement to mark the 40th anniversary of their relationship.

Meeting in London to celebrate 40 years since the Institute of Heating and Ventilation Engineers and Illuminating Engineering Society merged to form CIBSE, and the start of their collaboration with ASHRAE, the two organizations signed an agreement to implement a range of new initiatives. These include: collaborating strategically on projects in each other's regions, creating a long-term staff exchange program, encouraging collaboration between regions, groups and chapters and mutually promoting the publication of new codes and standards.

While the two organizations have been working closely together for four decades, this agreement represents the first time that they have committed to a joint approach in promoting the mutual global interests of CIBSE and ASHRAE, and agreed to a raft of activities and goals to promote a more sustainable world.

Alongside a wider commitment to improve knowledge sharing between the two organizations, including jointly presenting work to industry, members and legislators, the agreement also formalized a commitment to working at a grass-roots level. This includes encouraging cooperation between ASHRAE chapters and CIBSE Regions, coordinating the programs of similar groups such as Women in Building Services Engineering (WiBSE) and Women in ASHRAE (WiA), as well as aligning activity for the young engineers of both organisations and working together on emerging topics such as legionella, resiliency and cyber-security.

John Field, President of the Chartered Institution of Building Services Engineers, said: "It is a tremendous honor to be able to sign this agreement and start a new era of even closer cooperation between our institutions. This is an unprecedented opportunity to spread the benefits of our work together through every level of our organizations. Building services engineers are doing some of the most important work on the planet, and our two organizations have done invaluable work over the last 40 years to raise standards across our industries and across the world. With this agreement in place, I look forward to continuing this work for many more decades to come."

"Collaboration and sharing of knowledge are key to advancing the built environment industry," Tim Wentz, ASHRAE president, said. "ASHRAE's partnership with CIBSE over the last 40 years has proven to be an invaluable collaboration for our respective members and the industry at large. Our joint work through conferences, publications and education has greatly added to the worldwide best practices databank of innovative and successful technologies. I am pleased to celebrate this milestone and look forward to many more."

To help commemorate the 40th anniversary of collaboration and the signing of the new agreement, CIBSE and ASHRAE also hosted a seminar titled 'Defining, delivering and assuring building environments that are truly fit for use,' held at Gustave Tuck Lecture Theatre, University College London. A rare opportunity to hear from leading speakers from two of the world's most influential built environment-related bodies, the sessions considered how the skills and intelligence available to designers should be applied to ensure that built environments are not only environmentally-appropriate but also reflect the needs and wellbeing of occupants.

###

About CIBSE

CIBSE publishes Guidance and Codes which provide best practice advice and are internationally recognised as authoritative design guidance for building services. The CIBSE Knowledge Portal, which makes Guidance available online to all CIBSE members, is the leading systematic engineering resource for the building services sector. For more information about the Institution please visit www.cibse.org

About ASHRAE

ASHRAE, founded in 1894, is a global society advancing human well-being through sustainable technology for the built environment. The Society and its more than 56,000 members worldwide focus on building systems, energy efficiency, indoor air quality, refrigeration and sustainability. Through research, standards writing, publishing, certification and continuing education, ASHRAE shapes tomorrow's built environment today. More information can be found at www.ashrae.org/news.

Like us on Facebook | Follow us on Twitter | Join the conversation on ASHRAExCHANGE



News

1791 Tullie Cir. NE | Atlanta, Ga. 30329-2305 | 404-636-8400 | www.ashrae.org

For Release:
Oct. 19, 2016
Contact: Jodi Scott
Public Relations
678-539-1140
jscott@ashrae.org

ASHRAE Commends Montreal Protocol Amendment to Phase Down HFCs

ATLANTA – ASHRAE commends the governments involved in the adoption of the HFC amendment to the Montreal Protocol, which will result in a global phase down of production and consumption of hydrofluorocarbons (HFCs). The agreement was signed earlier this week.

The move comes as ASHRAE and leading U.S. government agencies, built environment associations and companies launch a multi-million dollar research program that will establish a more robust fact base about the properties and the use of flammable refrigerants.

The research is part of a \$5.8 million program funded by ASHRAE, the Air-Conditioning, Heating, and Refrigeration Institute (AHRI), the U.S. Department of Energy (DOE), the Association of Home Appliance Manufacturers (AHAM), the California Air Resources Board (CARB), and Johnson Controls. This program is part of an ongoing global effort to phase down the use of high global warming potential (GWP) refrigerants and identify appropriate climate-friendly alternatives.

“Flammable refrigerants hold great promise for reducing the use of HFCs in refrigerants and thereby lowering the environmental impact of air-conditioning and refrigeration systems,” ASHRAE President Tim Wentz, said. “ASHRAE applauds the Kigali Amendment and is pleased to be a partner in cutting edge research effort to better understand how to safely deploy flammable refrigerants.”

The agreement calls for reduction of HFCs equivalent to 80b metric tons of carbon dioxide through 2047 and will thereby avoid almost a half degree C of global warming. Several ASHRAE members were among those attending the Protocol meetings. Among them were ASHRAE Presidential Member Jim Wolf and ASHRAE Director-at-Large Bill McQuade.

“The update of product safety standards and building codes to include A2L refrigerants is essential to the success of this agreement,” McQuade said. “The interest in our A2L research program by the parties was very high. In fact, several indicated to me interest in becoming a partner and funding additional research in the future.”

ASHRAE, founded in 1894, is a global society advancing human well-being through sustainable technology for the built environment. The Society and its more than 56,000 members worldwide focus on building systems, energy efficiency, indoor air quality, refrigeration and sustainability. Through research, standards writing, publishing, certification and continuing education, ASHRAE shapes tomorrow's built environment today. More information can be found at www.ashrae.org/news.

 Like us on Facebook |
  Follow us on Twitter |
  Join the conversation on ASHRAECHANGE



News

1791 Tullie Cir. NE | Atlanta, Ga. 30329-2305 | 404-636-8400 | www.ashrae.org

For Release:
 Oct. 21, 2016
 Contact: Jodi Scott
 Public Relations
 678-539-1140
jscott@ashrae.org

Online Thermal Comfort Compliance Tool Included in New ASHRAE User's Manual

ATLANTA – A new User's Manual for ASHRAE's thermal comfort standard provides an overview for new users while also including more detailed information for those more familiar with its requirements.

The User's Manual, based on ANSI/ASHRAE Standard 55-2013, *Thermal Environmental Conditions for Human Occupancy*, provides detailed information on the requirements of the standard. It includes tables, illustrations and examples to aid users in the design, commissioning, and measuring and rating of thermal comfort in buildings.

The manual includes a free online thermal comfort tool that can be used as the official tool for showing compliance with Standard 55-2013 along with all of the published addenda. This online tool is available only to those who purchase the User's Manual and can be accessed from any internet connected device. The web-based CBE/ASHRAE Thermal Comfort Tool was developed by the Center for the Built Environment at the University of California Berkeley.

"For a new user of Standard 55, the manual provides a great overview of what it takes to make a space thermally comfortable for the occupants," Abhijeet Pande, chair of the Standard 55 committee, said. "This includes descriptions of how to account for the environmental, occupant and local factors that impact comfort. For an experienced user of Standard 55, the manual provides insights into requirements that are sometimes hard to understand in the standard. The User's Manual provides examples of calculations that will help even the most experienced user who may struggle with figuring out where and how to get an input needed for thermal comfort calculations."

The manual also includes:

- Information on the intent and application of Standard 55
- Guidance on applying the principles of acceptable thermal comfort and effective thermal control
- Useful reference material to assist designers, owners and users in efficiently completing a successful and compliant design
- Guidance to building operation and maintenance personnel
- Descriptions of compliance options and tools

The cost of the ANSI/ASHRAE Standard 55 User's Manual is \$99, ASHRAE members (\$115, non-members). To order, visit www.ashrae.org/bookstore or contact ASHRAE Customer Contact Center at 1-800-527-4723 (United States and Canada) or 404-636-8400 (worldwide) or fax 678-539-2129.

ASHRAE, founded in 1894, is a global society advancing human well-being through sustainable technology for the built environment. The Society and its more than 56,000 members worldwide focus on building systems, energy efficiency, indoor air quality, refrigeration and sustainability. Through research, standards writing, publishing, certification and continuing education, ASHRAE shapes tomorrow's built environment today. More information can be found at www.ashrae.org/

Like us on Facebook | Follow us on Twitter | Join the conversation on ASHRAExCHANGE



News

1791 Tullie Cir. NE | Atlanta, Ga. 30329-2305 | 404-636-8400 | www.ashrae.org

For Release:
Oct. 26, 2016
Contact: Jodi Scott
Public Relations
678-539-1140
jscott@ashrae.org

ASHRAE/IES Publish 2016 Energy Efficiency Standard

ATLANTA – Numerous energy savings measures resulting from industry input are contained in the newly published energy efficiency standard from ASHRAE and IES.

ANSI/ASHRAE/IES Standard 90.1-2016, *Energy Efficiency Standard for Buildings Except Low-Rise Residential Buildings*, contains 125 addenda published since the 2013 standard. The 2013 standard currently serves as the commercial building reference standard for state building energy codes.

This 2016 version is the 10th edition published since the original standard was first published in 1975 during the energy crisis of the United States.

"It is the overall goal of each version to create a consensus standard that saves energy and is technically feasible and cost effective," Drake Erbe, chair of the Standard 90.1 committee, said. "In addition, as a result of a strategic initiative begun in the 2013 cycle, the 2016 version has a new format that we believe will be easier for users, a new way of incorporation of reference material from other standards starting with climate data, and a performance path for compliance that rewards designs for achieving energy cost levels above the standard minimum."

Formatting

The standard has made significant formatting changes to improve its use. These include a one-column format for easier reading; exceptions separated and indented, set apart with a smaller font size; all defined terms are italicized; and alternating coloring scheme for table rows.

The most significant technical changes included are as follows:

- **Building Envelope:**
 - The mandatory provisions include the addition of envelope verification in support of reduced air infiltration and increased requirements for air leakage to overhead coiling doors.
 - The prescriptive requirements include increased stringency requirements for metal building roofs and walls, fenestration, and opaque doors. Requirements for Climate Zone 0 have been added.
 - Improved clarity of the standard ranged from defining exterior walls to building orientation to clarity around the effective R-value of air spaces

See Next Page For Continuation

Like us on Facebook | Follow us on Twitter | Join the conversation on ASHRAExCHANGE



News

1791 Tullie Cir. NE | Atlanta, Ga. 30329-2305 | 404-636-8400 | www.ashrae.org

For Release:
Oct. 26, 2016
Contact: Jodi Scott
Public Relations
678-539-1140
jscott@ashrae.org

From Previous Page

ASHRAE/IES Publish 2016 Energy Efficiency Standard

- o **Lighting:**

- o Modified control requirements that make the application of advanced lighting controls easier for increased energy savings
- o Modification of exterior and interior lighting power densities that reflect the efficiency gains from LED technology in specific applications where they are proven to be effective
- o Added minimum requirements for lighting in dwelling units to set limits on light source efficacy
- o Added additional control for lighting in parking areas based on occupancy to reduce energy use

- o **Mechanical:**

- o Chilled water plant metering – For the first time, the standard is requiring large electric driven chilled water plants to be monitored for electric energy use and efficiency.
- o DOAS requirements – Dedicated outdoor air systems were introduced over 25 years ago but there were no rating or efficiency requirements with which to comply. For the first time, this product class does have both efficiency and rating requirements with which they have to comply.
- o Elevator efficiency –Introduces requirements for designs to include both usage category and efficiency class. While a minimum threshold is not listed, it is the first step toward including minimum elevator efficiency requirement in a future standard. The standard referenced is an ISO standard since this the current industry standard for efficiency.
- o Economizer diagnostics – The standard is implementing requirements that air cooled DX cooling unit with economizers have a monitoring system to determine that the air economizer is properly working.

See Next Page For Continuation

Like us on Facebook | Follow us on Twitter | Join the conversation on ASHRAExCHANGE



News

1791 Tullie Cir. NE | Atlanta, Ga. 30329-2305 | 404-636-8400 | www.ashrae.org

For Release:
Oct. 26, 2016
Contact: Jodi Scott
Public Relations
678-539-1140
jscott@ashrae.org

From Previous Page

ASHRAE/IES Publish 2016 Energy Efficiency Standard

Energy Cost Budget (ECB) and Modeling. A significant change to the application of Appendix G as follows:

Appendix G now can be used as a path for compliance with the standard. Previously Appendix G was used only to rate “beyond code” performance of buildings. This new version of Appendix G can show compliance with the 2016 version of the standard in the following manner:

The proposed building design requires a new metric the Performance Cost Index (PCI) and demonstration that it is less than that shown in Table 4.2.1.1 based on building type and climate zone.

Another change is that the baseline design is now fixed at a certain level of performance, the stringency or baseline of which is expected not to change with subsequent versions of the standard. By this, a building of any era can be rated using the same method.

Other modifications to Appendix G include: elevator, motor, and refrigeration baselines; changes to the baseline for existing building projects; as well as specific opaque assemblies for the baseline envelope model. Modeling rule changes were also made to heat pump auxiliary heat, economizer shutoff, lighting controls, humidification systems, cooling towers, and the simulation of preheat coils.

Additional structural changes include:

Reference Standard Reproduction Annex 1 at the end of the document. This annex is designed to contain extracts from other references that are published with Standard 90.1 for the convenience of users. At present, the only standard this pertains to is ANSI/ASHRAE Standard 169, *Climatic Data for Building Design Standards*. Section 5.1.4 now cites this standard as the source for climatic data therefore extractions of tables and figures from Standard 169-2013 are included in Annex 1

Addition of 2 weather zones 0 A/B in all prescriptive requirements tables to correspond with Standard 169.

The cost of is \$119, ASHRAE members (\$140, non-members). To order, visit www.ashrae.org/bookstore or contact ASHRAE Customer Contact Center at 1-800-527-4723 (United States and Canada) or 404-636-8400 (worldwide) or fax 678-539-2129.

ASHRAE, founded in 1894, is a global society advancing human well-being through sustainable technology for the built environment. The Society and its more than 56,000 members worldwide focus on building systems, energy efficiency, indoor air quality, refrigeration and sustainability. Through research, standards writing, publishing, certification and continuing education, ASHRAE shapes tomorrow's built environment today. More information can be found at www.ashrae.org/news.

Like us on Facebook | Follow us on Twitter | Join the conversation on ASHRAExCHANGE



News

1791 Tullie Cir. NE | Atlanta, Ga. 30329-2305 | 404-636-8400 | www.ashrae.org

For Release:
Nov. 2, 2016
Contact: Jodi Scott
Public Relations
678-539-1140
jscott@ashrae.org

Sessions on Low GWP Refrigerants Featured at ASHRAE Conference

ATLANTA – In light of recent action by 197 countries agreeing to amend the Montreal Protocol to phase down the production and consumption of hydrofluorocarbons (HFCs) globally, industry experts will share guidance on how to incorporate low global warming potential refrigerants at the ASHRAE 2017 Winter Conference.

“Providing technical expertise for ASHRAE’s members and their clients continues to be the core of the Conference Technical Program,” Leon Shapiro, Conference chair, said. “Climate change will compel ASHRAE members to rethink HVAC&R for the future. In addition to sessions on low GWP refrigerants, the Technical Program will also focus on the water-energy nexus and designing for maximum efficiency, energy efficiency and IAQ in industrial spaces, and achieving projected results after all the modeling is completed. The rich experience from the Technical Program will leave the attendees better prepared to deal with these issues as they advance their professional careers.”

The 2017 ASHRAE Winter Conference takes place Jan. 28-Feb. 1 at Caesars Palace with the co-sponsored AHR Expo being held Jan. 30-Feb. 1 at the Las Vegas Convention Center. The two events are expected to draw thousands of industry professionals from around the world, drawing on the record breaking attendance from the 2011 Conference and Expo held in Las Vegas for the first time.

To register for the Conference, which includes free access to the Expo, visit www.ashrae.org/lasvegas.

The Technical Program features eight tracks, 86 papers, 28 technical papers presented via poster session, 248 presentations and 331 speakers. The tracks are Water-Energy Nexus, Advances in Mission Critical Design and Operation, Climate Change and Its Effects on HVAC&R Design and Technologies, Energy Efficient Industrial Buildings, Fundamentals and Applications, HVAC&R Systems and Equipment, Commercial and Industrial IAQ, and Building Operation and Performance: Meeting the Modeling Expectations.

Among the sessions is a two-part seminar, “Low-GWP Alternative Refrigerants and Their Applications.” The seminars feature six papers included in the November 2016 issue of ASHRAE’s *Science and Technology for the Built Environment*, focusing on thermophysical properties, modeling, heat transfer performance, lubricant/refrigerant miscibility and system applications of low-GWP halocarbon refrigerants containing unsaturated carbon bonds.

“As regulations and legislation become increasingly more widespread and restrictive, the HVAC&R industry will need to identify viable alternatives for existing refrigerant solutions,” J. Steven Brown, seminar chair, said. “This environmentally-driven change is different than those in the past since additional constraints are being placed on refrigerants in essence reducing the number of viable single-component solutions.”

Sessions pertaining to refrigerants in the Technical Program are:

- Seminar 64: Research Update on Activities Toward the Safe Use of Low GWP Flammable Refrigerants
- Seminars 40/56: Low-GWP Alternative Refrigerants and Their Applications: Parts 1 and 2
- Workshop 2: Optimization of Direct AC Systems with Low GWP Refrigerants
- Seminar 6: Recent Action in Evaporative Cooling
- Conference Paper Session 22: Refrigeration Systems and Low GWP Refrigerants

More information can be found at www.ashrae.org/news.